

**THREAD 3**  
POSITIVE PRACTICES

- I've noticed...
- Link the praise and explain
- Love that!

It is 'week 3' on our dinner menu after half term.

Eastfield Primary School  
Colliery Road  
Wolverhampton  
WV1 2QY

Email: [office@eastfieldpri.co.uk](mailto:office@eastfieldpri.co.uk)

School website: [www.eastfieldprimaryschool.org.uk](http://www.eastfieldprimaryschool.org.uk)

9<sup>th</sup> February 2024

Dear Parents / Carers,

It's been a very short and yet very busy  $\frac{1}{2}$  term! We have seen our core value of 'opportunity' in evidence with children experiencing visits, residentials and also representing Eastfield in both football and dance. This term, it has been lovely to welcome parents into school for assemblies, teacher curriculum workshops and NHS / Reflexions parent workshops. Next  $\frac{1}{2}$  term, we will be having our Spring Term 1-1 parent's evening, more details will follow after half term about how to book an appointment to see your child's class teacher.

**Congratulations to our Stars of the Week**

Class 1	Haajara A
Class 2	Theodore P
Class 3	Tahaani A
Class 4	Nicolas R
Class 5	Tomas P
Class 6	Parneet K
Class 7	Iris T
Class 8	Elijah J
Class 9	Donnika W
Class 10	Juleisy CM
Class 11	Mohammad A
Class 12	Abigail W
Class 13	Autumn G
Class 14	Judith NN

**Dates for your diary**

School closed for half term Monday 12<sup>th</sup> – 16<sup>th</sup> February 2024

School re-opens **Monday 19<sup>th</sup> February** at 8:40am  
**Wednesday 21<sup>st</sup> February 2:15pm** Parent Workshop delivered by School Nurses and Mrs Heaton on '*how to help your child go to sleep and stay asleep.*'

**Friday 1<sup>st</sup> March** Class 9 assembly 9:30am  
**Thursday 7<sup>th</sup> March** World Book Day 'Mr Men and Little Miss' characters – letter to be sent next week via SIMs app / email.  
**Friday 8<sup>th</sup> March 9am** – Y2 Parents / Children Maths together!  
**Tuesday 12<sup>th</sup> March** Parents Evening 3:30-6:30 (appointment only)  
**Friday 15<sup>th</sup> March** Class 8 assembly 9:30am  
**Tuesday 19<sup>th</sup> March** 10:45am Lower Phase Easter Concert at St Matthews Church (Class 5,6,7,8)  
Break up for Easter **Friday 22<sup>nd</sup> March.**

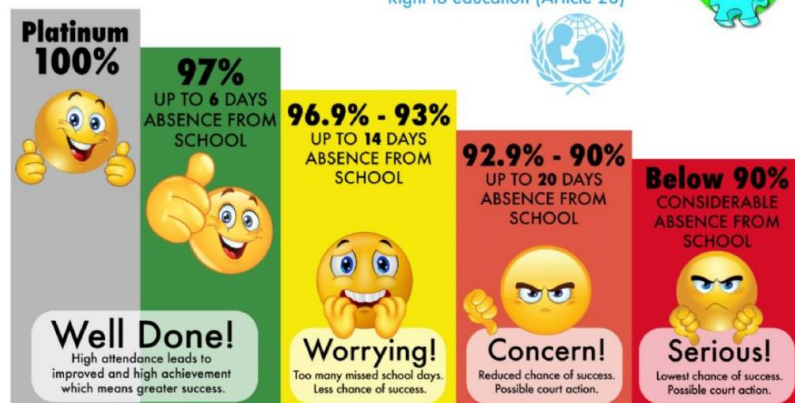
**School Attendance**

We are seeing an increasing number of children attending appointments during the school day – wherever possible please make routine dentist, doctor, and optician appointments for after school or during the holidays.

If an appointment is unavoidable or an emergency, then please ensure that your child attends school before and after the appointment so that they do not miss learning time.

**WHAT IS YOUR ATTENDANCE?**

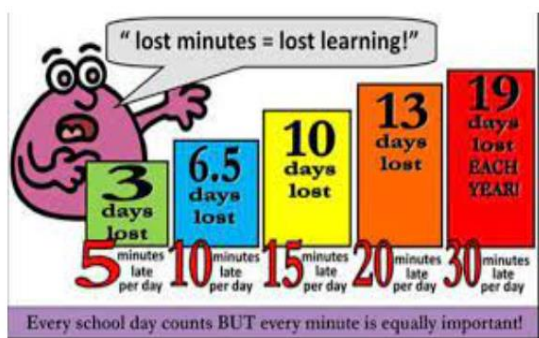
Right to education (Article 28)



There are 175 non school days a year. That's plenty of time to go on visits, holidays, shopping and other appointments.

**Punctuality**

Gates close at 8:50am PROMPT. Children do not like walking into classrooms late, they are embarrassed and can feel uncomfortable. **Please ensure that your child arrives on time at 8:40am**



I hope that you all have a lovely week off school and that the weather stays kind - no snow!  
Kind regards  
Mrs Hay