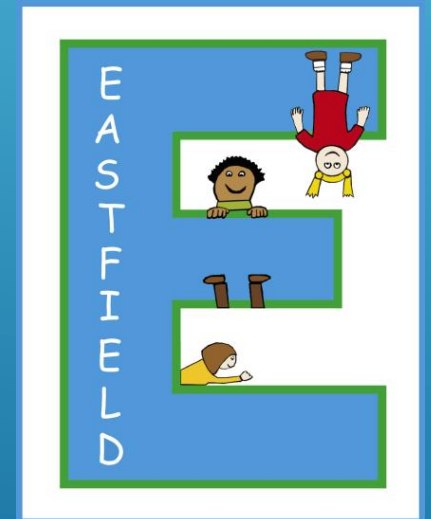


WELCOME TO EASTFIELD PRIMARY SCHOOL



Reception Year 2024-2025





MRS HAY
HEADTEACHER



MRS BIRD
DEPUTY HEADTEACHER



MRS HYLTON
ASSISTANT
HEADTEACHER



MR THELWELL
ASSISTANT
HEADTEACHER AND
SENCO



MRS FELLOWS
EARLY PHASE
LEADER



MRS EVANS
CLASS 1 TEACHER



MISS ARSHAD
CLASS 2 TEACHER



PASTORAL TEAM

Miss Rownes – Family Liaison
and Safeguarding Officer



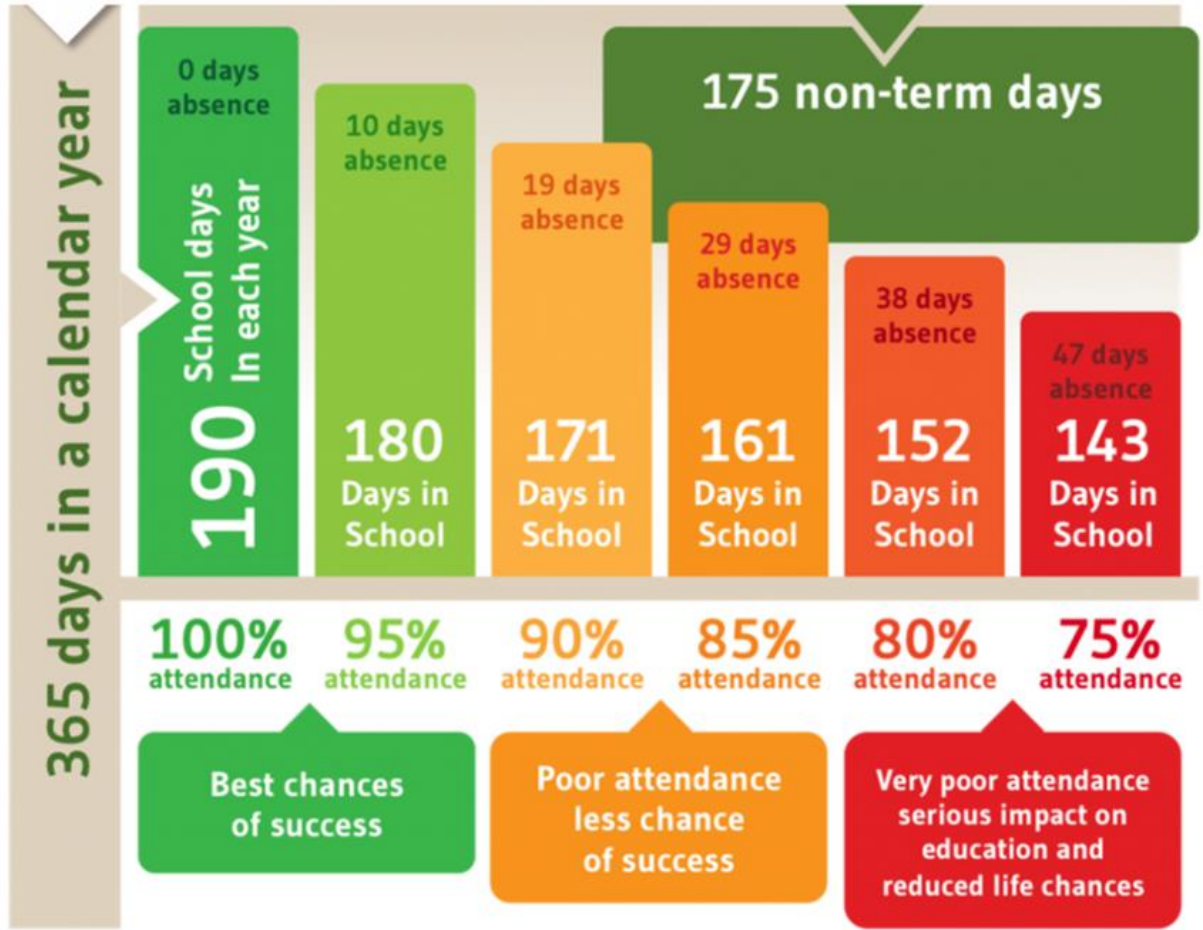
Mrs Heaton – Behaviour and
Welfare Officer





Attend Today, Achieve Tomorrow





DID YOU KNOW? A two week holiday in term time means that the highest attendance you can achieve is 94.7%

VISION AND VALUES

School Values

Opportunity and Diversity underpin our curriculum at Eastfield and our core values of:

Pride

Care

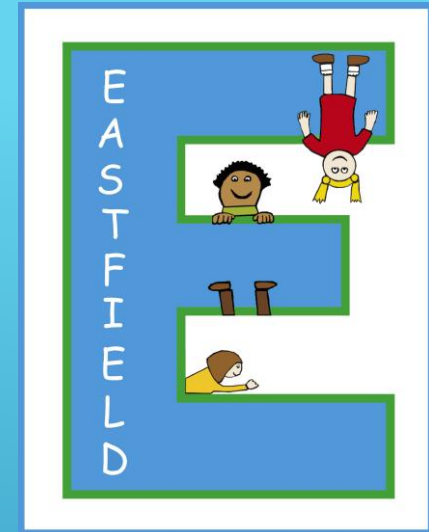
Respect and

Resilience

underpin everything we do at Eastfield Primary School.

By the time your child leaves Eastfield they will:

- Have been to the theatre
- Have learned how to play a musical instrument
- Have been swimming
- Have been to the library
- Have been to a museum
- Have been to the seaside
- Have stayed away from home (2 nights at Kingswood in Y2 and 4 nights at a residential centre in Y6)
- Have been to different places of worship including a church and a mosque
- Be able to speak another language
- Have held positions of responsibilities



Our core value is pride and we expect everyone to wear correct school uniform at all times

- ▶ Royal blue sweatshirt / cardigan
- ▶ White polo t-shirt
- ▶ Grey school skirt / grey or black school trousers
- ▶ Grey, white or black socks
- ▶ **BLACK PLAIN SCHOOL SHOES**
- ▶ (no logo or name)



SCHOOL UNIFORM

School jumpers and cardigans are available to buy from the school office via SCHOOL COMMS– please contact the office 01902 558604 or you can buy your child’s uniform online or in person from ‘Lads & Lasses’

Eastfield Primary School | Lads & Lasses Schoolwear
(ladsandlassesschoolwear.co.uk)



ADDRESS

50a Warstones Road
Penn
Wolverhampton
WV4 4LP

T: (01902) 334650

E: ladsandlassessales@live.com

STORE OPENING HOURS

| | |
|-----------|---------------|
| Monday | 9am to 5:30pm |
| Tuesday | 9am to 5:30pm |
| Wednesday | 9am to 5:30pm |
| Thursday | 9am to 5:30pm |
| Friday | 9am to 5:30pm |
| Saturday | 10am to 5 pm |

PE KIT

Your child will come to school in their PE kit on their PE day.

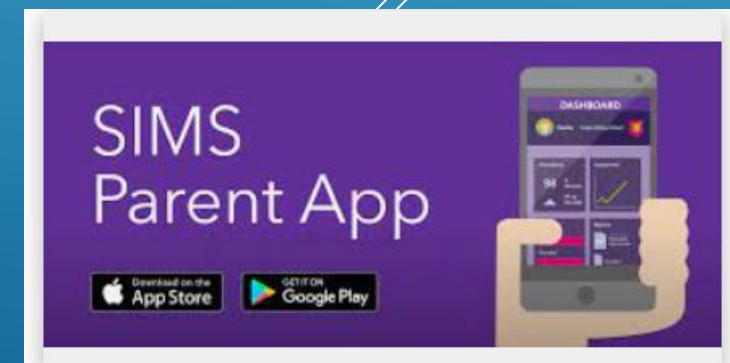
- ▶ White plain t-shirt
- ▶ Black plain sports shorts
- ▶ Black plain jogging bottoms
- ▶ Black school pumps
- ▶ NO EARRINGS OR JEWELLERY



SCHOOL COMMS

We are a 'cashless school' and use **SCHOOL COMMS** for school dinners, school uniform, and school visits. In order to set up **SCHOOL COMMS**, you will need to download the app from your app store, once your child is on our system the school office will be in touch with how to get onto the app.

Please download **The SIMs parent app**, as it allows you to check your child's attendance and achievements. You will also receive notifications and communications via the **SIMS parent app**.



Behaviour at Eastfield is built upon a restorative approach – we want the children to be:

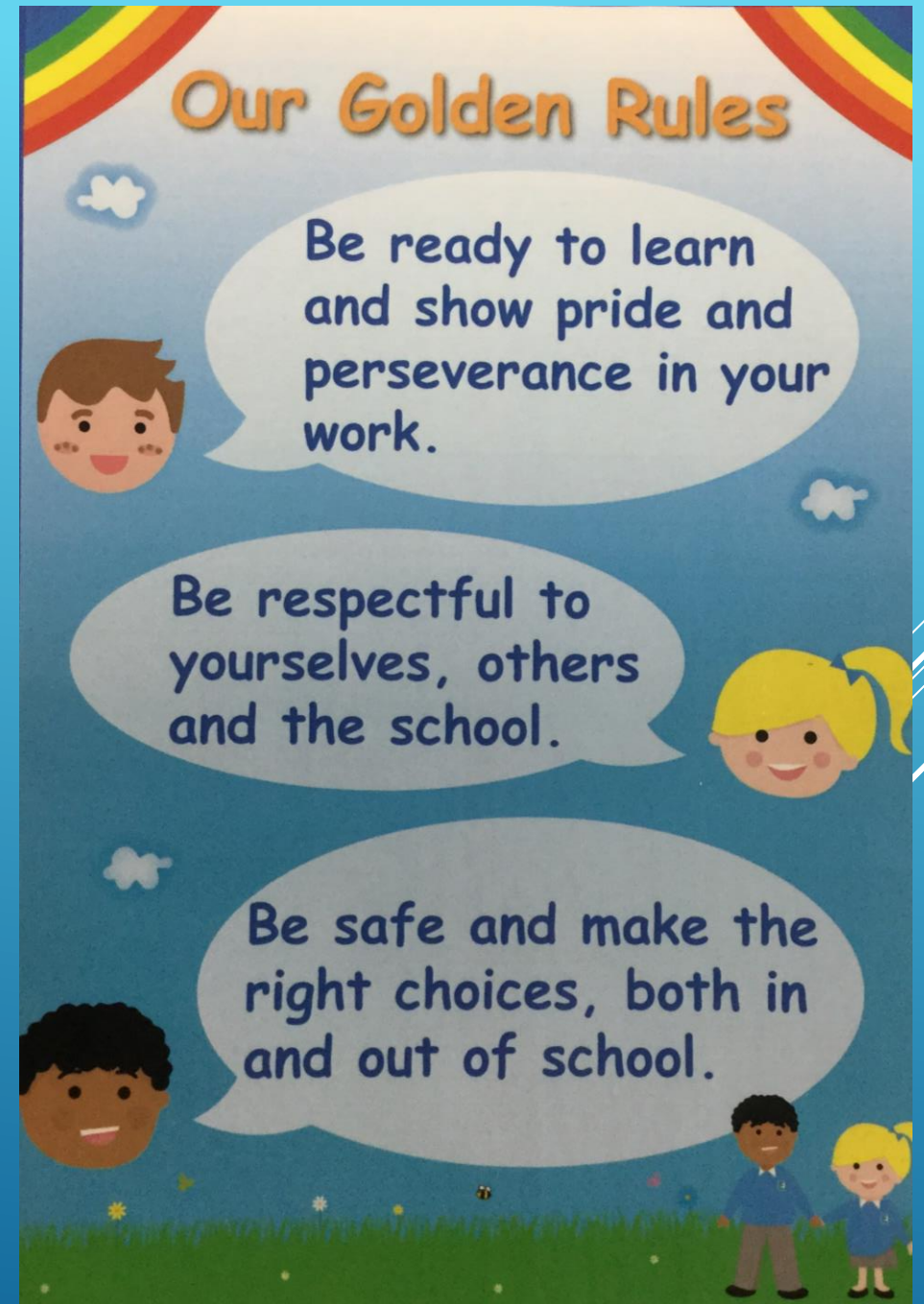
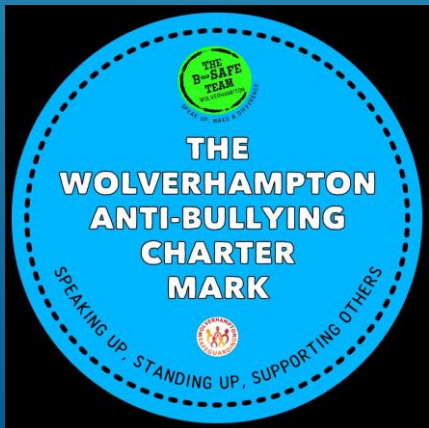
- Ready
- Respectful
- Safe

We want the children of Eastfield to take responsibility for their own actions and recognise how choices have consequences. We teach children to take steps to put things right if they have made poor choices and to learn how their behaviour can affect others .



We recognise all of our children and reward those who go 'above and beyond.'

There are clear consequences for behaviour which does not meet our high expectations



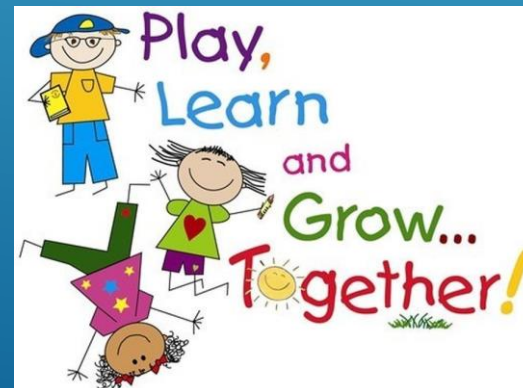
While your child is in the Foundation class, they will be covering 7 areas of learning:

Prime Areas

- ▶ Communication and Language
- ▶ Physical Development
- ▶ Personal, Social and Emotional Development

Specific Areas

- ▶ Literacy
- ▶ Mathematics
- ▶ Understanding the World
- ▶ Expressive Arts and Design



Curriculum in Foundation Stage

Phonics

Reading

Early Maths

Handwriting – Kinetic letters

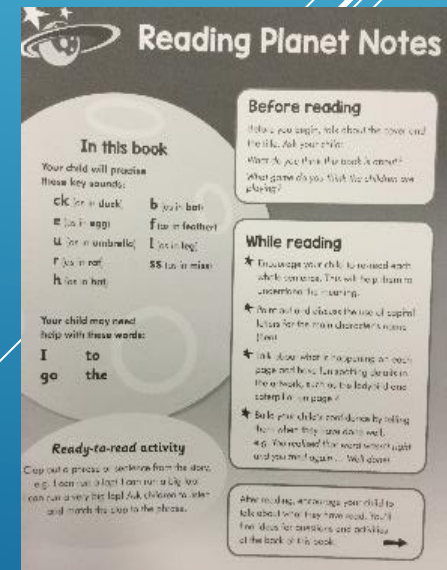
Helping Hands &

Once Upon a Time

Ways you can help:

Read the Phonics and Early maths section on the sway newsletter

Enjoy sharing books together with your child!



THURSDAY 4TH JULY 12.30-2.30PM



INDUCTION IN SEPTEMBER



Our normal school hours are 8:40-3:20pm, however as part of your child's transition we will be building up to these hours over the 1st term. Gates / Doors open at 8:40am.

| Week | Time | Drop off | Pick up |
|--|-----------------|--|--|
| Tues 3 rd - Fri 6 th INSET DAY on Mon | 8:40am - 2pm | Blue fire doors on the carpark | Blue fire doors on the carpark |
| Tues 10 th – Fri 13 th INSET DAY on Mon | 8.40am - 3pm | Blue fire doors on the carpark | Blue fire doors on the carpark |
| Mon 16 th – Fri 20 th | 8.40am – 3.20pm | Blue fire doors on the carpark | Multi Coloured fence on the playground |
| Tues 24 th – Fri 27 th INSET DAY on Mon | 8.40am – 3.20pm | Gates on Colliery Road, Griffin Street and Eastfield Grove | Multi Coloured fence on the playground |

PLEASE VISIT OUR WEBSITE

WWW.EASTFIELDPRIMARYSCHOOL.ORG.UK

OR follow us on facebook



www.facebook.com/eastfieldprimaryschool/

School office phone number is 01902 558604

School office email address is office@eastfieldpri.co.uk

THANK YOU



Please visit our 'New Reception Starters September 2024 page.'

Please read the parent 'leaflet' with your child to prepare them for the excitement of starting school.