

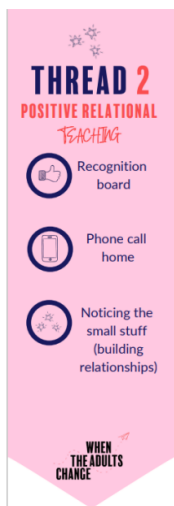
Supporting your child at home



- ◆ Please ensure your child is wearing the correct school uniform as stated in the uniform policy including black school shoes.
- ◆ Please make sure all school uniform is clearly named.
- ◆ Please send your child in P.E uniform on Wednesday. Plain black joggers or plain black shorts or plain black leggings, plain white shirt and school jumper/cardigan. (Remember no logos).
- ◆ Please send your child with their bookbags to school every-day.

Thread Two

This half term we are focusing on Thread 2.



Dates for your diary

Monday 13th November - Children to come in wearing odd socks for anti-bullying week

Tuesday 14th November - Parent's Evening Drop-in to see your child's book.

Friday 24th November - Bring a Bottle House Competition

Friday 1st December - Winter Fair - 4:30pm - 6:30pm

Monday 4th December - INSET day - School closed

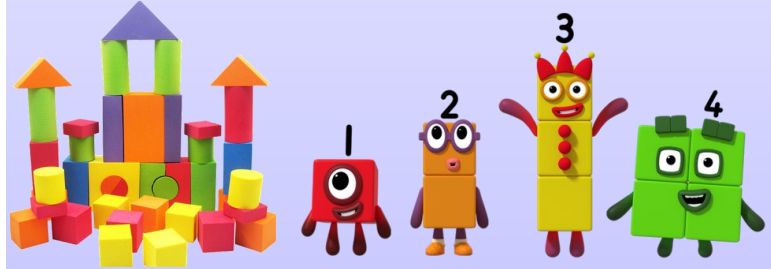
Friday 15th December - Christmas jumper day / Christmas dinner / Christmas parties

Tuesday 19th December - Early Phase Christmas Concert at St Mathew's Church at 10:45am

Friday 22nd December - School breaks up at 1:30pm



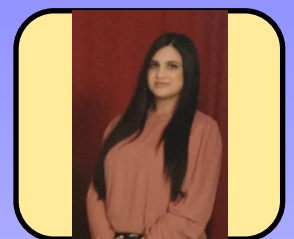
Foundation Topic
Autumn Term
November - December



Mrs Evans



Miss Arshad



Our new topic is: 'Eastfield Blocks'

Prime Areas

Personal, Social and Emotional Development

This half term I will continue to learn expectations for behaviour in school including the Golden rules, Ready, Respectful and Safe. I will learn to share and take turns. I will start to understand restorative principles such as the importance of telling the truth and being responsible for my own actions. I will become aware of the similarities and difference between myself and others and among families, communities and traditions, respecting diversity.



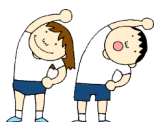
Communication and Language

This half term I will continue to listen to others in one-to-one or small groups and join in when conversation or topic interests me. I will show understanding of prepositions such as under, on top, behind by carrying out an action or selecting correct pictures. I will begin to understand why and how questions. I will use talk to explain what is happening and anticipate what might happen next.



Physical Development

This half term I will be able to pick up small objects for example, beads, rice, pebbles with tweezers using one hand. I will continue to explore a range of small tools, including scissors, paint brushes and cutlery. I will begin to form letters and numbers. I will continue to show awareness of space for myself. I will also be able to hold each animal position from Kinetic Letters for at least 5 seconds (lizard, meerkat, penguin and gorilla).



Specific Areas

Literacy



This half term I will be learning about the characters called 'Alphablocks'. I will learn the name for each letter and what sounds each letter makes and try to use some of these in my writing. I will write my name correctly with a capital letter. I will begin to write some sounds correctly in a sequence. I will begin to show an awareness for writing, attempting list, labels and captions. I will also be learning to blend and segment orally. I will read some high frequency words. I will also start to sing the alphabet song saying each letter name.

Mathematics

This half term I will be learning about the characters called 'Numberblocks'. I will have a deep understanding of numbers to 3, including the composition of each number and able to write numerals correctly. I will know 1 more and 1 less of numbers up to 5. I will be learning to match numeral to quantity up to 5. I will be able to talk about patterns in the environment and continue or create a repeated 2 step pattern.



Understanding the World

This half term I will talk about why things happen and how things work. I will develop an understanding of growth, decay and changes over time. I will enjoy joining in with family customs and routines. I will recognise and describe special times or events for family or friends. I will show care and concern for living things and the environment. I will begin to understand the effect my behaviour can have on the environment.



Expressive Arts and Design

This half term I will continue to explore colour and how colour can be changed. I will create representations of both imaginary and real-life ideas, events, people and objects. I will develop an understanding of how to create and use sounds intentionally.

