



Welcome to Spring term 2024!



I hope you have all had a fantastic Christmas holiday and are ready for Spring term!

Important dates for Spring term 2024

Monday 26th February: SATs workshop 2.30pm

Monday 15th January: After school clubs start

Thursday 7th March: World Book Day

Wednesday 10th January: Walsall art gallery trip

Tuesday 12th March: Parent's evening

Wednesday 17th January: Parent workshop 2.30pm

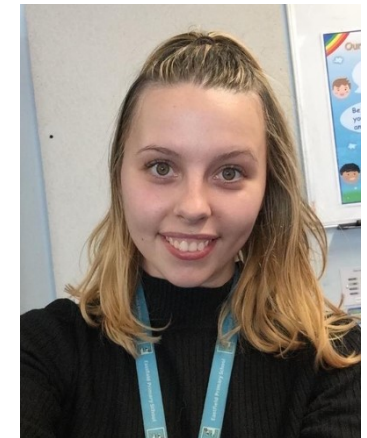
Friday 22nd March: Break up for Easter

12th February-16th February: Half term

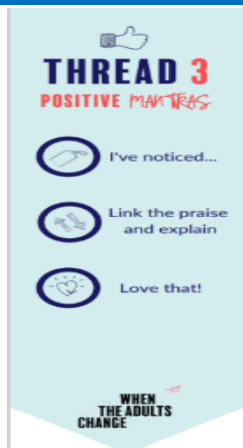
Adults in Class 13



Miss Eagle



Miss Stevens



Home reading: Your child's reading book will be changed every Friday; it is important that you listen to your child read at home.

Homework: This is given out every Friday and due in the following Thursday.

Spellings: Our spelling test is held every Friday, please help your child learn their spellings.

PE: PE is on Tuesdays, your child will need to come into school wearing their PE uniform. PE uniform is as follows: a plain, unbranded white T-shirt, plain, unbranded black shorts, leggings or tracksuit bottoms—no other colours are accepted. PE uniform expectations are the same high expectations Eastfield has for school uniform.

Nautical Know How

Theme - History/Geography

The key theme of our topic is Tudor Exploration. We will be learning about the effects of Tudor exploration.

In Geography, we will learn why our population changes? Investigating why certain parts of the world are more populated than others; exploring birth and death rates; discussing social, economic and environmental push and pull factors; learning about the population in Britain and its impacts.

English

Narrative - Michael Morpurgo - Authors and texts

Non-fiction - Biography and Autobiography: Michael Morpurgo

Read and Respond & Talk for Writing - "War Horse"

Computing

Programming A - variables in games Explores the concept of variables in programming through games in Scratch.

Data and information - introduction to spreadsheets This unit introduces the learners to spreadsheets

PE

Games—Tennis

Dodgeball - Discussion of tactics.

PSHE

Choices and Values, Cyber bullying, Puberty

SEAL

Good to Be Me / Going for Goals

SRE

Puberty Wolverhampton Puberty pack

RE

What will make Wolverhampton a more respectful community?

Design and Technology

Textiles - Tudor cushion.

Food - Spicy Chicken Pasta

Maths

Children will learn to:

- Associate a fraction with division and calculate decimal fraction equivalents.
- Convert between different units of measurements.
- Solve problems involving the calculation and conversion of measures.
- Recognise that shapes with the same areas can have different perimeters and vice versa. Use formulae for area and volume of shapes. Calculate the area of parallelograms and triangles. Calculate, estimate and compare the volume of cubes and cuboids.
- Interpret and construct pie charts and line graphs and use them to solve problems. Calculate and interpret the mean.
- Use simple formula, find pairs of numbers that satisfy an equation with two unknowns.
- Generate and describe linear number sequences. Enumerate possibilities of combinations of two variables.

Languages

My bedroom, places in town, directions, buying food, numbers 1-100, Easter

Art

Drawing—Full body portraits (Leonardo Da Vinci)

Painting—Acrylics (George Gower and Nicolas Hilliard)

Music

Through the unit A New Year Carol, children will learn to record the performance and compare it to previous performances.

Science

Light - How we see (inc colours), light waves, reflection in our eyes

Electricity - Voltage, electrical components and circuit diagrams